



Green Rubber System



www.grsystem.co.kr

SOILCOM - 21

Soil Hardener Series



SOIL-ONE Hardener for Soil Packaging

Soil hardening agents are liquid hardener agents of copolymer type composed of EVA, ACRYLIC, SILICA and synthetic latex resin. It is a product for pavement which can replace asphalt/cement concrete pavement with liquid hardening agent.

Product Usage

- Walkway / Roadway / Light vehicle road / Heavy vehicle road / Highway base surface road

Product Instruction

- SOIL-ONE (Liquid Hardener Agent) is mixed with 1kg of raw solution and 5-6kg of water.
- When ECO-BINDER (High Strength Solidifying Agent) is mixed in soil, 6-7kg of water is mixed with 1kg of undiluted solution.

Precautions

- When using the local soil, its particles of the soil should be permeable to the air and pass the 10mm size of the mesh.
- When the liquid hardener agent is mixed with water, it is diluted evenly by adding water first and liquid hardener agent.
- The liquid hardener agent should be stored in a shaded warehouse and avoid direct sunlight in tropical areas.



SOIL-200 Hardener for Soil Blocking

SOIL-200 is a liquid hardener agent of Copolymer type which is made by mixing EVA, ACRYLIC and synthetic latex resin.
It is a hardener agent added to soil brick, earth retaining wall and earth structure for building.
The product has excellent adhesion and enhancement in bending system.



Product Usage

- soil brick / soil block / soil retaining wall / agricultural waterway / earth structure / soil stabilization work

Product Instruction

- Mix 1kg of undiluted solution of SOIL-200(liquid hardener agent) with 9-10kg of water.
- A variety of soil structure products can be made through the mixing ratio of soil and ECO-BINDER.

Precautions

- When using the local soil, its particles of the soil should be permeable to the air and pass the 10mm size of the mesh.
- When the liquid hardener agent is mixed with water, it is diluted evenly by adding water first and liquid hardener agent.
- The liquid hardener agent should be stored in a shaded warehouse and avoid direct sunlight in tropical areas.

ECO-BINDER High Strength Soil Solidification Agent

ECO-BINDER is a self-compacting 50MPa powder product with optimal combination of pozzolan, lime, inorganic salts and other components. It is a high strength product that can make various soil structure by using local soil, loess soil and volcanic soil.



Product Usage

- Soil brick/ vegetation (shore) block/ earth retaining wall/ small reservoir with a debris barrier/ highway base surface road construction.
- It is used in combination with SOIL-ONE and SOIL-200 products.

Product Instruction

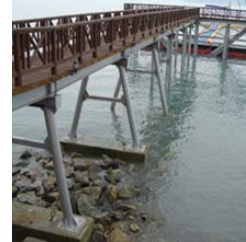
- Brick production is made by mixing 25% of ECO-BINDER product in soil that has passed 15mm mesh and then printed with oil hydraulic press of 5kg/cm² or more.
- Earth structure such as retaining wall construction is mixed 25% of ECO-BINDER product with soil and mortar equipment and it is used after curing for 7 days after putting.
- Highway and Industrial Road Construction will use 25% mixed soil and ECO-BINDER products with wet construction method, then 3-4cm of asphalts/concretes are used on top.

Precautions

- For ECO-BINDER products are sensitive to moisture, please keep out of the rain.

SHARK - 21

Inorganic Paint Series



SHARK-21 (COAT) Inorganic Paint

Made mainly of inorganic ingredients, the product is eco-friendly polymerized paint containing special agent. The inorganic coating agent has excellent properties, both physical and chemical, and does not emit formaldehyde. It is the state-of-the-art finishing paint that allows anti-staining effect and pleasant surroundings.

Product Usage

- Anti-flame and anti-stain coating for walls in department stores, apartments etc.
- Coating for indoor wall surfaces, bridges, tunnels, mortars and concrete surfaces for underground paths, tiles etc.
- Eco-friendly coating for public buildings such as hospitals, schools, kindergartens
- Anti-flame and anti-white ants coating for historic heritage and wooden structures

Features

- Adheres tightly to concrete, wooden and tiled surfaces.
- Boasts resistance against temperatures, alkali, acid and impact.
- Free of odor and toxic gases thanks to eco-friendly inorganic ingredients.
- No peel off from the surface thanks to thermal expansion coefficient the same as concrete and moisture ventilation
- Vivid colors thanks to pure inorganic ingredients

Product Types

- Wooden structures: Transparent
- Concrete structures: Transparent, Colored
- Indoor Wallpapers: Transparent, Colored



SHARK-21 (TILE) Inorganic Paint

SHARK 21 TILE is paint made of inorganic ingredient, excellent in anti-staining and cleaning effect, and does not emit formaldehyde. The product is finishing paint for floors and is three times more resilient than epoxy-applied surfaces with vivid and diverse colors.

Product Usage

- Floor application for department stores, officetels, apartments and underground parking lots
- Floor application for storages, precision processing facilities, apartment-style plants and industrial buildings
- Interior and exterior work for swimming pools and water tanks
- Repair works for stairs, corridors and floors
- Labs and semi-conductor plants susceptible to environment

Features

- Adheres tightly to concrete, wooden and tiled surfaces
- Boasts resistance against temperatures, alkali, acid and impact
- Eco-friendly paint safe to human body
- No peel off from the surface thanks to thermal expansion coefficient the same as concrete and moisture ventilation
- Vivid colors thanks to pure inorganic ingredients and applicable as non-slippery

Product Types

- Floors of plants and storages: Transparent, Colored
- Coating for parking lots: Transparent, Colored
- Coating for marbles and tiles: Transparent
- Coating for marbles (patterns): Colored



SHARK-21 (STEEL) Inorganic Paint

SHARK 21 is inorganic paint for steel metals, containing special agent. It allows high-functioning physical and chemical properties by creating high-strength film for protection. It is also excellent in resisting chemicals and corrosion. The state-of-the-art finishing paint is also highly anti-stain, allowing pleasant and clean environment.

Product Usage

- Industrial and chemical production facilities, containing storages and steel structures
- Storage, precision processing facilities, apartment-style plants, steel structures
- Repair works for stairs exposed outside and indoor metal stairs
- Tanks containing nitric acid, hydrochloric acid and sulfuric acid, steel pipe structures and artworks

Features

- Adheres tightly to surfaces
- Boasts resistance against temperatures, alkali, acid and impact.
- Eco-friendly paint safe to human body.
- Vivid colors thanks to pure inorganic ingredients and applicable as non-slippery

Product Types

- For storage tanks and steel structures: Transparent, Colored
- For anti-rust and metal floors: Colored
- Coating to protect against nitric acid, hydrochloric acid, sulfuric acid and acetic acid: Transparent
- Heat-resistance coating for industrial pumps: Colored
- Coating for aluminum and zinc surface: Colored



NEWCOM - 21

Concrete Repair System



NEWCOM- PM Functionality Primer

NEWCOM PRIMER is a water paint that Butadiene Content is mixed with acryl polymer and special additive. It is eco-friendly primer textured paint with outstanding adhesion for any floor materials such as concrete, glasses, and iron plates.

Product Usage

- Repair work for pier, bridge deck, and concrete structure
- Repair work for marine concrete structure
- Primer work for concrete floor
- Repair work for iron structure

Features

- Outstanding adhesion for any materials such concrete, glasses, and iron plates.
- Excellent water-proofing and chemically resistant
- Excellent strength, abrasion resistance, and durability.
- Outstanding working property with low W/C (freezing resistance)
- Concrete dust is rarely created.

Precautions

- Remove foreign substance and oil on the constructed surface totally.
- Deeper cracks would be filled by putty.
- Conduct painting work twice with brush, roller, and low speed spray.



NEWCOM-SP Anti-Neutralizing And Anti-Chloridizing Paint

NEWCOM-SP is a new concept anti-neutralizing and anti-chloridizing paint for concrete repair by complementing pros and cons of both resins from Emulsion that one core cell consists of several resins as special resin for anti-neutralizing paint.

Product Usage

- Repair work for exposed concrete bridge
- Repair work for exposed concrete wall, inside of culvert
- Repair work for concrete wall of underground roadway
- Repair work for protective concrete of coastal structures

Features

- Blocking effect of acid vapor, Chloride, Sulfate on the concrete surface
- Permeability to emit water of concrete
- Excellent water repellent on the concrete surface
- Durability and chemically resistant to extend the life of concrete

Precautions

- Remove every foreign substance on the concrete surface.
- When finishing surface process, conduct primer work with “NEWCOM-PM”.
- Conduct painting work twice with Roller, Spray, and Brush.



NEWCOM-CT Coating Product For Concrete Surface

NEWCOM-CT is a protective coating product for concrete surface which is mixed with minerals material and special additive.

It is excellent property by building a high strength film and has outstanding chemically resistant and corrosion proof function. It is a cutting edge textured paint offering a pleasant environment through soil proof and wet abrasion.

Product Usage

- Coating work for exposed concrete bridge.
- Coating work for inside of exposed concrete wall, culvert.
- Coating work for concrete wall of underground roadway.
- Coating work for protective concrete of coastal structures.

Features

- Eco-friendly product without formaldehyde and TVOC.
- Outstanding weather protection, alkali resistance, acid resistant, and durability.
- Outstanding waterproof, erosion control, and durability.
- A product with various purposes such as concrete, stone, tile, and timber.

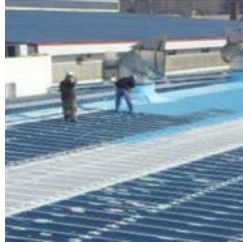
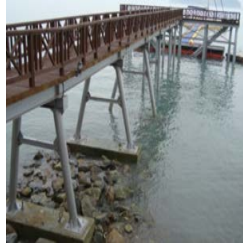
Precautions

- Remove foreign substance and oil on the constructed surface totally.
- Blend double (base material and hardener) type product in the correct ratio.
- Conduct painting work twice with brush, roller, and low speed spray.
- Possible to express various colors because of a mineral paint.



NATURE - 21

Special Paint Series



GHA - 100 Anti-Corrosion Paint

GHA - 100 absorbs and hardens the humidity in the air through its new coating material without having to remove the rust on metal surface. It boasts excellent adhesion on a variety of surface materials other than metal including wood, concrete and glass fiber.

Product Usage

- Protective coating for metal and concrete from acid as well as anti-corrosion coating for surfaces prone to rust
- on both interior and exterior for acid / solvent / oil tanks, pipelines both above the ground and underground
- Anti-corrosion for water circulation tank or cooling tanks, surface coating for paints containing lead or other toxic chemicals

Product Features

- Coating work allowed directly on rust or surface painted with paint with toxic chemicals
- Excellent resistance to chemicals and salt water / High tensile strength: 475kgs/cm² / High insulation
- Indoor temperature difference $\pm 5^{\circ}\text{C}$ if factory floor is done with waterproofing / Strong against impact / Resistant against UV / Highly durable coating that lasts over 10 years



GHA - 200 Thermal Barrier Paint

GHA - 200 Thermal Barrier Paint consists of extremely thin special ceramic component of 1mm. The paint boasts special thermal blocking feature that allows creation of air bubbles and nano cracks. It has excellent protection against the heat for outdoor construction and heating effect for indoor construction by bouncing off the heat energy (electronic waves) and heat flow.

Product Usage

- Interior and exterior painting of houses
- Painting of military armory and storage tank
- Painting of panel, metal storage, factory roofs and walls

Product Features

- Special ceramic coating agent blocks off heat conduction.
- Effective in removing condensation and enhancing durability and anti-flame effect.
- Prevention of noise and condensation on ceilings and walls by nano ceramic particles with fine air bubbles.
- Eco-friendly product via inorganic ingredients harmless to human body.



GHA - 300 Thermal Insulation Paint

GHA - 300 is non-flammable, non-toxic and water-based coating agent for thermal insulation made of new CD-201 porous material, eight different ceramics and four different special resin mixture. It features anti-corrosion, anti-germs and anti-fungus effects. It lowers the temperature of exterior surface to 75~110°C by coating the duct of 540°C or pipe of less than 10mm thin.

Product Usage

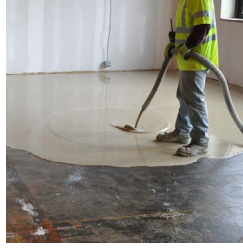
- Exterior coating on fire-resistant bricks
- Insulation of pipes of high / low temperature
- Insulation of PIPE ELBOW and VALVE

Product Features

- Thermal-resistant temperature of 3,000°C
- Reduction in fuel consumption by more than 35%
- No condensation or pipe corrosion via condensation
- No need for operation suspension at the factory, Easier repair and maintenance



DOLPHIN - 21 Self-Leveling Mortar



DOLPHIN-PM Functionality primer

DOLPHIN PRIMER is a water paint that Butadiene Content is mixed with acryl polymer and special additive. It is eco-friendly primer textured paint with outstanding adhesion for any floor materials such as concrete, glasses, and iron plates.

Product Usage

- Primer for automatic leveling mortar
- Repair work primer for marine concrete structure
- Primer for concrete floor
- Repair work primer for iron structure

Product Features

- Outstanding adhesion for any materials such concrete, glasses, and iron plates.
- Excellent water-proofing and chemically resistant.
- Excellent strength, abrasion resistance, and durability.
- Outstanding working property with low W/C (freezing resistance)
- Concrete dust is rarely created.

Precautions

- Remove foreign substance and oil on the constructed surface totally.
- Deeper cracks would be filled by putty.
- Conduct painting work twice with brush, roller, and low speed spray.



DOLPHIN-SL Automatic leveling mortar

DOLPHIN-SL is a rapid hardening automatic leveling mortar with outstanding flowability. It is an underlayment product to use a floor surface which needs perfect horizontal plane. It consists of red clay, special polymer, compound, and select aggregate. It is a high performance automatic leveling mortar working in very low 0.5 – 10mm and possible to fast follow-up work due to early and long age strength.

Product Usage

- Floor of new construction or remodeling in dwelling and commercial building
- Floor of new construction or remodeling in a henhouse, pen, and floricultural pot
- Concrete cement floor which needs heavy intensity and solid horizontal plane in early age.
- Only for internal uses.

Product Features

- Make flat floor surface by outstanding flowability.
- Shorten air by fast follow-up work.
- Easy to work by excellent construct ability.
- Outstanding early strength and non-contractibility.

Precautions

- Remove every foreign substance on the concrete surface.
- When finishing surface process, conduct primer work with “NEWCOM-PM”.
- Conduct painting work twice with Roller, Spray, and Brush.



DOLPHIN-CT SL upper coatings

DOLPHIN-CT is a protective coating for upper surface of leveling mortar to mix minerals materials with special additive.

It is excellent property by building a high strength film and has outstanding chemically resistant and corrosion proof function. It is a cutting edge textured paint offering a pleasant environment through soil proof and wet abrasion.

Product Usage

- Coating for upper automatic leveling mortar
- Coating work for inside of exposed concrete wall, culvert
- Coating work for concrete wall of underground roadway
- Coating work for protective concrete of coastal structures

Product Features

- Eco-friendly product without formaldehyde and TVOC
- Outstanding weather protection, alkali resistance, acid resistant, and durability
- Outstanding waterproof, erosion control, and durability
- Its degree of hardness is 3H or more (degree of epoxy hardness is 1H.)

Precautions

- Remove foreign substance and oil on the constructed surface totally.
- Blend double (base material and hardener) type product in the correct ratio.
- Conduct painting work twice with brush, roller, and low speed spray.
- Possible to choose various colors because of a mineral paint





Green Rubber System Co., Ltd.

ADD No.506, 5th Fl. 43-55, Mugunghwa-ro, Ilsandong-gu, Goyang-si, Gyeonggi-do, Republic of Korea
TEL +82-31-998-5925
FAX +82-31-913-5926
WEB www.grsystem.co.kr